



Where we are with the Kent BAP



Head Office: Kent Wildlife Trust, Tyland Barn, Sandling, Maidstone, Kent ME14 3BD
Tel: 01622 662012 Fax: 01622 671390 www.kentwildlifetrust.org.uk info@kentwildlife.org.uk
Registered Charity No. 239992. A company limited by guarantee No. 633098. VAT Registration No. 204799154

Protecting **Wildlife** for the Future



Out of 112 targets:

- No progress/Target not achieved – 3
- Some progress (behind schedule) – 7
- Some progress (on schedule) – 6
- Target achieved – 4
- Not specified – 92

Lowland Heath

LH2

Create a minimum of 5ha of new heathland by 2010, and 15ha of new heathland by 2020; aim to create at least 60ha of new heathland by 2010, and 100ha of new heathland by 2020. This target is to be achieved without any net loss of lowland acid grassland

Target achieved





Built-Up Areas & Gardens

BU5

Ensure biodiversity is incorporated in the development of Kent's community strategies

Not specified

Coastal Vegetated Shingle

CVS1

Ensure no net loss of current extent of the 691 ha of coastal vegetated shingle resource in Kent

Not specified

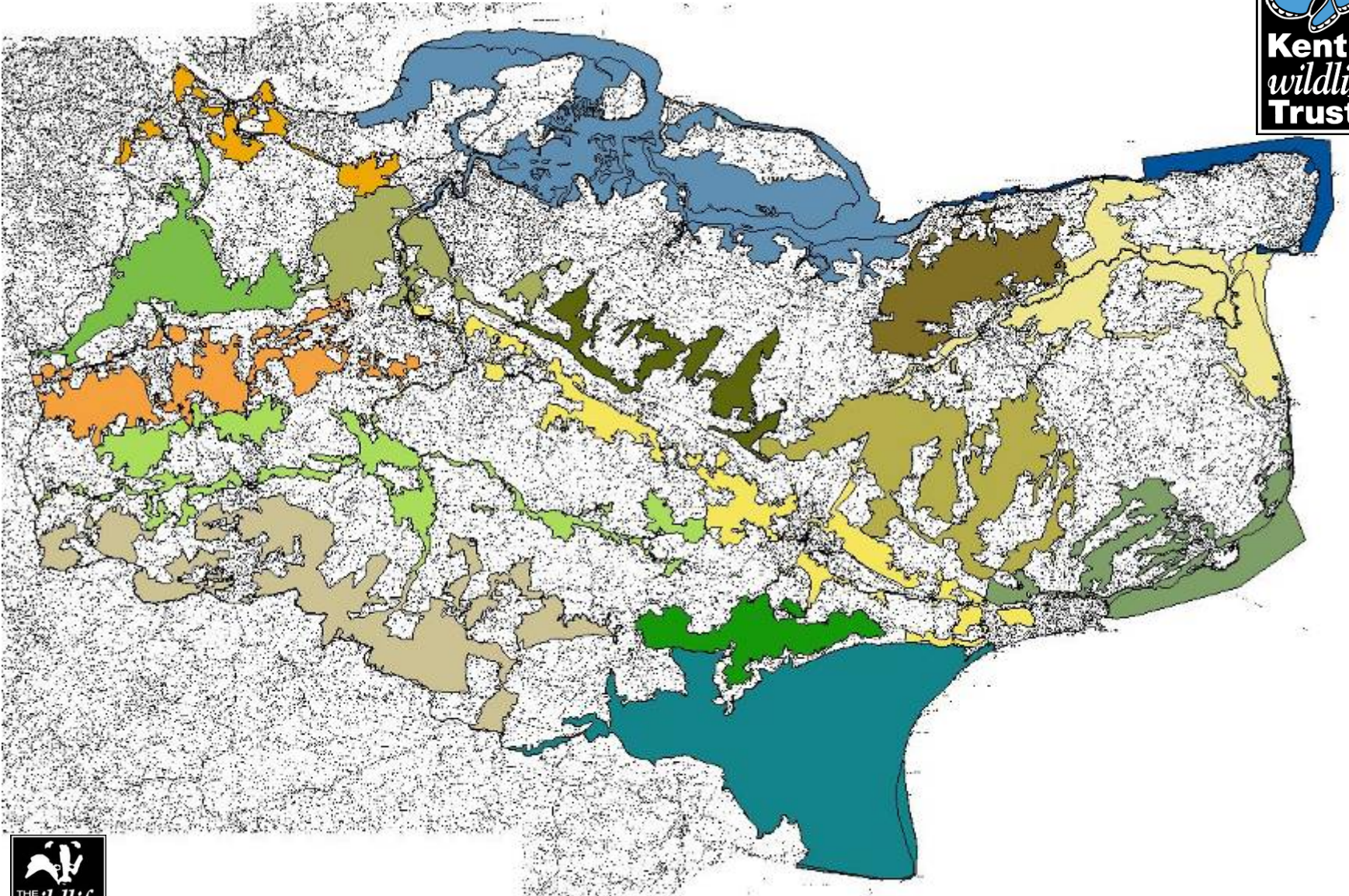
Lowland Calcareous Grassland

LCG2

Enhance and restore 415 ha by 2010, 664 ha by 2020 and 830 ha by 2026

Not specified





Protecting Wildlife for the Future



Address <http://strategy.sebiodiversity.org.uk/map.php>

Google Go

South East Biodiversity Strategy

Search

Home About Biodiversity Habitat and Species The SEB Strategy Who are you? Resources

South East England Biodiversity Forum

Biodiversity Opportunity Areas

[contact us](#)

The BOAs are the regional priority areas of opportunity for restoration and creation of Biodiversity Action Plan (BAP) habitats. They are a spatial representation of the BAP targets and are areas of opportunity, not constraint. The BOAs shown in the map do not include all the BAP habitat in the region, nor do they include all the areas where BAP habitat could exist. In particular, more work is needed to develop opportunity areas in urban and in marine environments.

Biodiversity areas





And in 2010 ...?

- Focus on delivery – especially Green Infrastructure
- Have we halted the loss of biodiversity in Kent?
- Better understanding of long-term changes in Kent's biodiversity
- More and better communication
 - Of achievements
 - Of targets
 - Of need

